

HAZEL PEEBLES & ASSOCIATES LLC
 300 WEST 17TH STREET, SUITE 100
 DALLAS, TEXAS 75202
 TEL: 214-742-1111
 FAX: 214-742-1112
 WWW.HAZELPEEBLES.COM

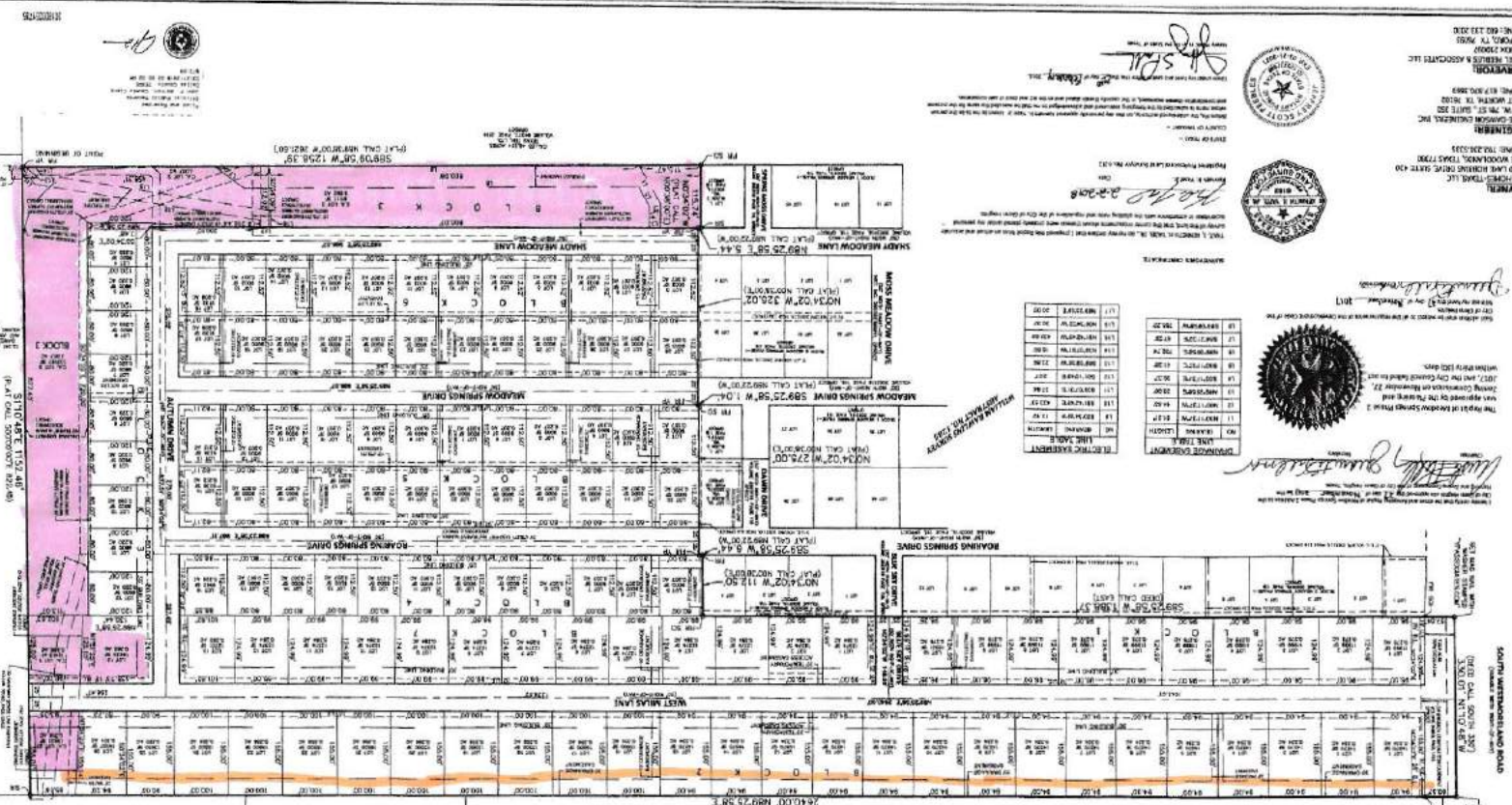
MEADOW SPRINGS - PHASE 2
REPLAT

BEING A REPLAT OF A REPEAT OF MEADOW SPRINGS - PHASE 2 RECORDED IN INSTRUMENT NUMBER 2017002117 IN PLAT RECORDS, DALLAS COUNTY, TEXAS SITUATED IN THE WILLIAM MANNING SURVEY, DISTRICT NO. 1285, CITY OF DALLAS, TEXAS.

THE PURPOSE OF THIS REPLAT IS TO:

- REVERSE BUILDING LINE SETBACKS
- CHANGE THE BUILDING SETBACKS FROM 12 FEET TO 10 FEET
- CHANGE THE BUILDING SETBACKS FROM 12 FEET TO 10 FEET
- CHANGE THE BUILDING SETBACKS FROM 12 FEET TO 10 FEET

BLOCK 3 AND LOT 2 BLOCK 7
 BLOCK 3 FROM UTILITY EASEMENT TO ACCESS



LEGEND

1. BOUNDARY LINE OF THE TRACT DESCRIBED BY INSTRUMENT NO. 2017002117 IN PLAT RECORDS, DALLAS COUNTY, TEXAS.
 2. BOUNDARY LINE OF THE TRACT DESCRIBED BY INSTRUMENT NO. 2017002117 IN PLAT RECORDS, DALLAS COUNTY, TEXAS.
 3. BOUNDARY LINE OF THE TRACT DESCRIBED BY INSTRUMENT NO. 2017002117 IN PLAT RECORDS, DALLAS COUNTY, TEXAS.
 4. BOUNDARY LINE OF THE TRACT DESCRIBED BY INSTRUMENT NO. 2017002117 IN PLAT RECORDS, DALLAS COUNTY, TEXAS.
 5. BOUNDARY LINE OF THE TRACT DESCRIBED BY INSTRUMENT NO. 2017002117 IN PLAT RECORDS, DALLAS COUNTY, TEXAS.
 6. BOUNDARY LINE OF THE TRACT DESCRIBED BY INSTRUMENT NO. 2017002117 IN PLAT RECORDS, DALLAS COUNTY, TEXAS.
 7. BOUNDARY LINE OF THE TRACT DESCRIBED BY INSTRUMENT NO. 2017002117 IN PLAT RECORDS, DALLAS COUNTY, TEXAS.
 8. BOUNDARY LINE OF THE TRACT DESCRIBED BY INSTRUMENT NO. 2017002117 IN PLAT RECORDS, DALLAS COUNTY, TEXAS.
 9. BOUNDARY LINE OF THE TRACT DESCRIBED BY INSTRUMENT NO. 2017002117 IN PLAT RECORDS, DALLAS COUNTY, TEXAS.
 10. BOUNDARY LINE OF THE TRACT DESCRIBED BY INSTRUMENT NO. 2017002117 IN PLAT RECORDS, DALLAS COUNTY, TEXAS.

VICINITY MAP

1. SHOWS THE LOCATION OF THE TRACT DESCRIBED BY INSTRUMENT NO. 2017002117 IN PLAT RECORDS, DALLAS COUNTY, TEXAS.
 2. SHOWS THE LOCATION OF THE TRACT DESCRIBED BY INSTRUMENT NO. 2017002117 IN PLAT RECORDS, DALLAS COUNTY, TEXAS.
 3. SHOWS THE LOCATION OF THE TRACT DESCRIBED BY INSTRUMENT NO. 2017002117 IN PLAT RECORDS, DALLAS COUNTY, TEXAS.
 4. SHOWS THE LOCATION OF THE TRACT DESCRIBED BY INSTRUMENT NO. 2017002117 IN PLAT RECORDS, DALLAS COUNTY, TEXAS.
 5. SHOWS THE LOCATION OF THE TRACT DESCRIBED BY INSTRUMENT NO. 2017002117 IN PLAT RECORDS, DALLAS COUNTY, TEXAS.

DISTANCE 0 100 200 300 400 500 FEET

THE CITY OF DALLAS, TEXAS, HAS REVIEWED THIS REPLAT AND FINDS IT TO BE IN ACCORDANCE WITH THE SUBDIVISION MAP ACT, CHAPTER 207, TITLE 56, OF THE TEXAS GOVERNMENT CODE.

THE CITY ENGINEER HAS REVIEWED THIS REPLAT AND FINDS IT TO BE IN ACCORDANCE WITH THE SUBDIVISION MAP ACT, CHAPTER 207, TITLE 56, OF THE TEXAS GOVERNMENT CODE.

THE COUNTY ENGINEER HAS REVIEWED THIS REPLAT AND FINDS IT TO BE IN ACCORDANCE WITH THE SUBDIVISION MAP ACT, CHAPTER 207, TITLE 56, OF THE TEXAS GOVERNMENT CODE.

THE DISTRICT ENGINEER HAS REVIEWED THIS REPLAT AND FINDS IT TO BE IN ACCORDANCE WITH THE SUBDIVISION MAP ACT, CHAPTER 207, TITLE 56, OF THE TEXAS GOVERNMENT CODE.

HAZEL PEEBLES & ASSOCIATES LLC
 300 WEST 17TH STREET, SUITE 100
 DALLAS, TEXAS 75202
 TEL: 214-742-1111
 FAX: 214-742-1112
 WWW.HAZELPEEBLES.COM

ENGINEER
 REGISTERED PROFESSIONAL ENGINEER
 STATE OF TEXAS
 NO. 47807
 EXPIRES 08/31/2024

SURVEYOR
 REGISTERED PROFESSIONAL SURVEYOR
 STATE OF TEXAS
 NO. 47807
 EXPIRES 08/31/2024

OWNER
 THE TRACT DESCRIBED BY INSTRUMENT NO. 2017002117 IN PLAT RECORDS, DALLAS COUNTY, TEXAS

PLAT TABLE

LOT	AREA (SQ. FT.)	AREA (SQ. M.)
1	1,234,567	113,800
2	1,234,567	113,800
3	1,234,567	113,800
4	1,234,567	113,800
5	1,234,567	113,800
6	1,234,567	113,800
7	1,234,567	113,800
8	1,234,567	113,800
9	1,234,567	113,800
10	1,234,567	113,800
11	1,234,567	113,800
12	1,234,567	113,800
13	1,234,567	113,800
14	1,234,567	113,800
15	1,234,567	113,800
16	1,234,567	113,800
17	1,234,567	113,800
18	1,234,567	113,800
19	1,234,567	113,800
20	1,234,567	113,800
21	1,234,567	113,800
22	1,234,567	113,800
23	1,234,567	113,800
24	1,234,567	113,800
25	1,234,567	113,800
26	1,234,567	113,800
27	1,234,567	113,800
28	1,234,567	113,800
29	1,234,567	113,800
30	1,234,567	113,800
31	1,234,567	113,800
32	1,234,567	113,800
33	1,234,567	113,800
34	1,234,567	113,800
35	1,234,567	113,800
36	1,234,567	113,800
37	1,234,567	113,800
38	1,234,567	113,800
39	1,234,567	113,800
40	1,234,567	113,800
41	1,234,567	113,800
42	1,234,567	113,800
43	1,234,567	113,800
44	1,234,567	113,800
45	1,234,567	113,800
46	1,234,567	113,800
47	1,234,567	113,800
48	1,234,567	113,800
49	1,234,567	113,800
50	1,234,567	113,800
51	1,234,567	113,800
52	1,234,567	113,800
53	1,234,567	113,800
54	1,234,567	113,800
55	1,234,567	113,800
56	1,234,567	113,800
57	1,234,567	113,800
58	1,234,567	113,800
59	1,234,567	113,800
60	1,234,567	113,800
61	1,234,567	113,800
62	1,234,567	113,800
63	1,234,567	113,800
64	1,234,567	113,800
65	1,234,567	113,800
66	1,234,567	113,800
67	1,234,567	113,800
68	1,234,567	113,800
69	1,234,567	113,800
70	1,234,567	113,800
71	1,234,567	113,800
72	1,234,567	113,800
73	1,234,567	113,800
74	1,234,567	113,800
75	1,234,567	113,800
76	1,234,567	113,800
77	1,234,567	113,800
78	1,234,567	113,800
79	1,234,567	113,800
80	1,234,567	113,800
81	1,234,567	113,800
82	1,234,567	113,800
83	1,234,567	113,800
84	1,234,567	113,800
85	1,234,567	113,800
86	1,234,567	113,800
87	1,234,567	113,800
88	1,234,567	113,800
89	1,234,567	113,800
90	1,234,567	113,800
91	1,234,567	113,800
92	1,234,567	113,800
93	1,234,567	113,800
94	1,234,567	113,800
95	1,234,567	113,800
96	1,234,567	113,800
97	1,234,567	113,800
98	1,234,567	113,800
99	1,234,567	113,800
100	1,234,567	113,800

THE TRACT DESCRIBED BY INSTRUMENT NO. 2017002117 IN PLAT RECORDS, DALLAS COUNTY, TEXAS.

THE CITY OF DALLAS, TEXAS, HAS REVIEWED THIS REPLAT AND FINDS IT TO BE IN ACCORDANCE WITH THE SUBDIVISION MAP ACT, CHAPTER 207, TITLE 56, OF THE TEXAS GOVERNMENT CODE.

THE COUNTY ENGINEER HAS REVIEWED THIS REPLAT AND FINDS IT TO BE IN ACCORDANCE WITH THE SUBDIVISION MAP ACT, CHAPTER 207, TITLE 56, OF THE TEXAS GOVERNMENT CODE.

THE DISTRICT ENGINEER HAS REVIEWED THIS REPLAT AND FINDS IT TO BE IN ACCORDANCE WITH THE SUBDIVISION MAP ACT, CHAPTER 207, TITLE 56, OF THE TEXAS GOVERNMENT CODE.